

SPONSORSHIP OPPORTUNITIES



WESTGATE BIODIVERSITY
Bili Nursery & Landcare

4 Wharf Rd, Port Melbourne VIC 3207

Phone: 0411 117 637

Email: andrea@westgatebiodiversity.org.au

Website: westgatebiodiversity.org.au

MEET OUR WONDERFUL TEAM

By far, our volunteers have made the most valuable contribution to our vision. Over the past decade their efforts have been equivalent to having 11 full time workers.



**WESTGATE PARK STAFF &
VOLUNTEERS**



**BILI NURSERY'S STAFF &
VOLUNTEERS**

WHAT YOUR SPONSORSHIP MEANS TO US

Corporate volunteers tell us the experience is worthwhile and great to be outdoors and we benefit enormously from their efforts to help us.

We have a pressing need for income and this is where corporate groups can help too. For instance, we use:

- Equipment like slashers to control exotics.
- Materials and tools to propagate plants for big revegetation projects like Yulakut Wilam Reserve and the Pollinator Corridor Project.

We also offer citizen science, tours and activities for families and schools, for free.



Indigenous plants propagated every year.

SPONSORSHIP BENEFITS FOR YOU

- Demonstrate your ESG (environmental, social & governance) efforts by being featured on our website and other promotional materials as an official sponsor.
- By participating in environmental sustainability initiatives you can attract talent to your organization who share this value.
- Learn about planting and growing locally indigenous plant species, and the importance of protecting the natural environment.
- Provide practical support which makes a real impact to land conservation in your local area.
- Foster corporate team-building and a sense of purpose through hands-on participation.
- Strengthen team/group dynamics and have some fun!
- Our site is centrally located in Port Melbourne, with parking and public transport options nearby.



HOW WE IMPROVE BIODIVERSITY

Bush-like parks and indigenous plants are vital for biodiversity and, as a result of our volunteer efforts, there is good habitat and a great diversity of fauna and fungi.

Our species count so far:

127

species of birds that visited or are resident in the Park



75

species of fungi observed identified and recorded on iNaturalist



150

species of lizards, skinks, beetles and bees, dragonflies, possums, turtles, microbats and more



300+

species of indigenous plants propagated and planted out by volunteers

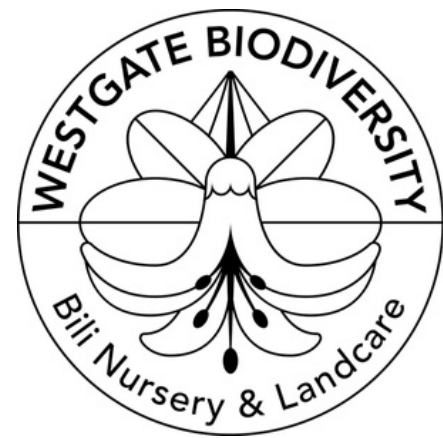


ABOUT US

Westgate Park was once a sand quarry, a race track and rubbish tip! After Westgate Bridge was built, the land beneath the bridge was formed into an undulating park with wetlands and lakes. It was then pretty much neglected for over a decade.

In 1999 Friends of Westgate Park started work revegetating this marvellous 40ha. site with over 300 species of indigenous plants. The St Kilda Indigenous Nursery Cooperative propagated indigenous plants of the Melbourne region.

In 2018 we amalgamated, becoming:



TESTIMONIALS FROM VOLUNTEERS LIKE YOU

“THANK YOU SO MUCH FOR HOSTING US TODAY, ALL PARTICIPANTS HAD A GREAT TIME PLANTING AND LEARNING!”



Cindy, Viva energy

“THANKS FOR HAVING US ON MONDAY. I BELIEVE EVERYONE REALLY ENJOYED THE DAY! HOPING WE CAN ARRANGE ANOTHER VOLUNTEERING DAY AT WESTGATE NEXT YEAR!”



Jacinta, Mazars

“I’VE BEEN VOLUNTEERING AT WESTGATE PARK FOR A NUMBER OF YEARS. IT’S FANTASTIC TO SEE THE PROGRESS AND IMMERSE YOURSELF IN NATURE MINUTES FROM THE CITY. A HIGHLY WORTHWHILE DAY TO CONNECT WITH YOUR TEAM”



TREASURY WINE ESTATES

Michael, TWC



dentsu



Transurban



WE HAVE A RANGE OF VOLUNTEER ACTIVITIES

Corporate volunteer activities are run on Mondays and Wednesdays in the Park, Tuesday and Wednesdays at Bili Nursery, 525 Williamstown Road, Port Melbourne.

We can accommodate groups of up to 25 people in the Park or 15 people in the Nursery at one time, so you may need to split up your volunteers across multiple days for larger groups.



- **Planting:** planting trees, shrubs, grasses, wildflowers and more, usually from tubestock.
- **Weeding:** Removing weeds before they take over!
- **Mulching:** Protecting the soil and moisture retention.
- **Nursery activities:** Propagation, seed collection and 'cleaning', repotting and weeding pots.

EXAMPLE DAY

9:30 am Welcome, housekeeping & safety induction.

10:00 am Roll up your sleeves and get cracking!

11:00 am Break for morning tea.

11:30 am Continue with activities.

12:30 pm Enjoy lunch and hear about the history and biodiversity of the park.

1:30 pm Continue with activities.

2:30 pm Goodbyes and thank yous!

VOLUNTEER ACTIVITY CALENDAR

Volunteer activities run throughout the year. If you have any specific requirements, just let us know and we can recommend and organise the best activities for your group!

ACTIVITY	JAN	FEB	MAR	APR	MAY	JUN	JUL	AUG	SEP	OCT	NOV	DEC
PLANTING												
MULCHING												
WEEDING												
SPECIES REMOVAL												
NURSERY ACTIVITIES												



Heavy lifting



Some walking



Repetitive hand work



Uneven surfaces



Under cover

Calendar to be used as an indicative guide. Changes can occur due to seasonal variations and weather conditions. We can also organise personalized activities on demand. Let us know what you are looking for and we'll prepare it for you.





SPONSORSHIP PACKAGES

Sponsorship annual contributions are based on the number of volunteer visits per year.

For example, the Banksia package of 15 visits could have 15 people coming on one day, or a smaller groups (minimum 5 people) split across multiple days.

So that we can provide the best experience possible, on a single day we can welcome up to 25 people at the Park and up to 15 at the Nursery (a total of 40 people per day).

Note: The Correa and Epacris packages would require the group to be split over a minimum of 2 days.

	 Banksia \$2000 15 visits	 Grevillea \$3,500 25 visits	 Correa \$5,750 40 visits	 Epacris \$9,000 60 visits
Morning Tea & Lunch provided	✓	✓	✓	✓
Monthly bird survey report	✓	✓	✓	✓
Your company logo listed as a major sponsor on our website	✓	✓	✓	✓
Certificate of appreciation	✓	✓	✓	✓
Bi-Annual report of the work being done		✓	✓	✓
Westgate Biodiversity digital supporter badge (for use on your email signatures, website, Linked In page etc.		✓	✓	✓
Post volunteer day mentions across our digital and social platforms (Website, eNewsletter, Facebook and Instagram)			✓	✓
Tube Wildflower for each volunteer			✓	✓
10% discount at Bili Nursery for one year for the participants				✓
Plantable seeded paper Thank You Card for each volunteer				✓

LAYOUT OF THE PARK

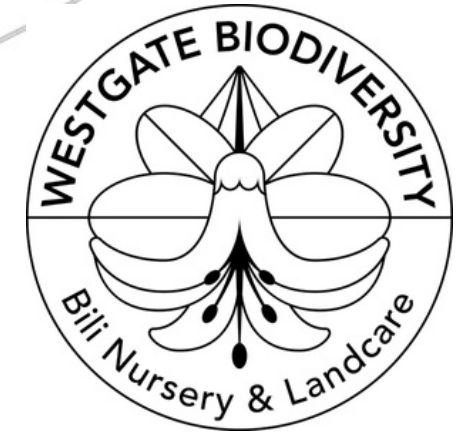
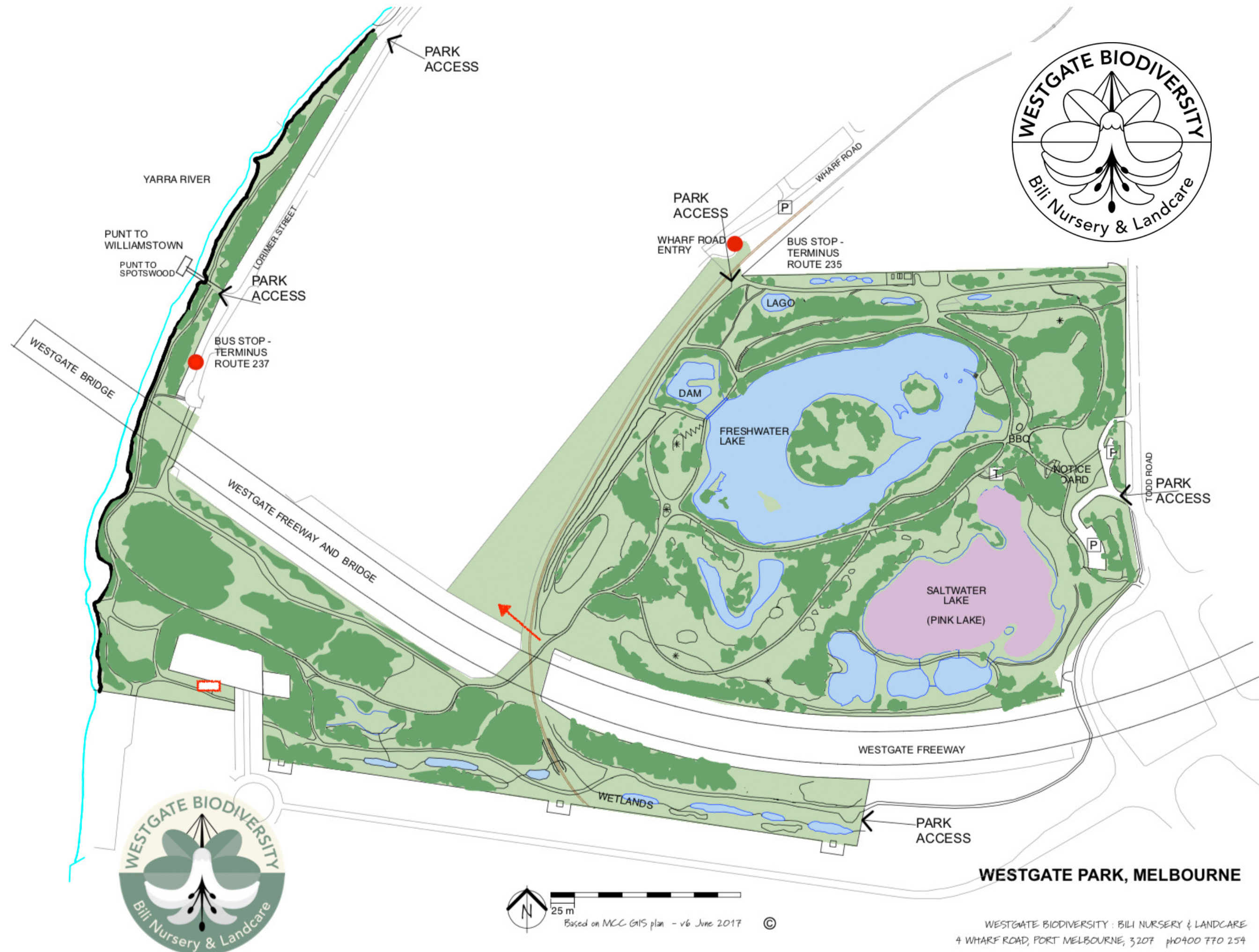
WHERE TO FIND US

We'll meet your team at the BBQ shelter.

If you drive or ride to the park, you can access through the two main car parks on Todd Road.

If you are coming by public transportation, the **235 bus line** will leave you on Wharf Road Entry.

You can also access via Lorimer Street, however there is a bit of a walk from there so we recommend any of the prior options.



FREQUENTLY ASKED QUESTIONS

For any further questions or to discuss our options, please contact our Corporate Volunteers Coordinator:

Andrea Garcia
andrea@westgatebiodiversity.org.au

CAN WE ADD ADDITIONAL VOLUNTEERS?

We will happily accommodate up to 5 extra volunteers for an additional \$115pp to cover catering and staffing costs. If you expect anymore than 5 extra people, we ask that you move up to the next Sponsorship tier.

WHAT HAPPENS IF THERE IS WET WEATHER ON THE DAY?

Activities at the nursery can continue as this space is under cover.

In the park, we can provide rain jackets or we can move activities to covered areas if needed.

CAN WE HAVE TWO GROUPS IN ONE DAY?

We can welcome groups in the morning and afternoon, counting total attendees as 70% of the day's capacity. For example, with the Banksia package, 10 participants in each session count as 14 full-day spots, leaving 11 for future bookings. ***

CAN WE BRING ANY CHILDREN?

While corporate volunteering is designed for adults, groups can bring children* if parents are present and take full responsibility for their safety.

IS THERE ANYTHING WE NEED TO BRING?

Closed shoes, a hat, sunscreen, water bottle and plenty of energy!

*to the park only.

***This option includes only morning/afternoon tea.

THANK YOU

